

Safety of Persons Who need Assistance for Evacuation

Let's prepare together, and evacuate together!

◆ Who are "persons who need assistance for evacuation"?

Among elderly persons, disabled persons, sick or wounded persons, infants, foreigners, etc., those who need some assistance when a disaster occurs are considered "persons who need assistance for evacuation." In order to protect these persons from disasters, make arrangements so that care and assistance according to their conditions can be positively provided through cooperation in the community.



For creating disaster-resistant communities

A new mechanism has been implemented

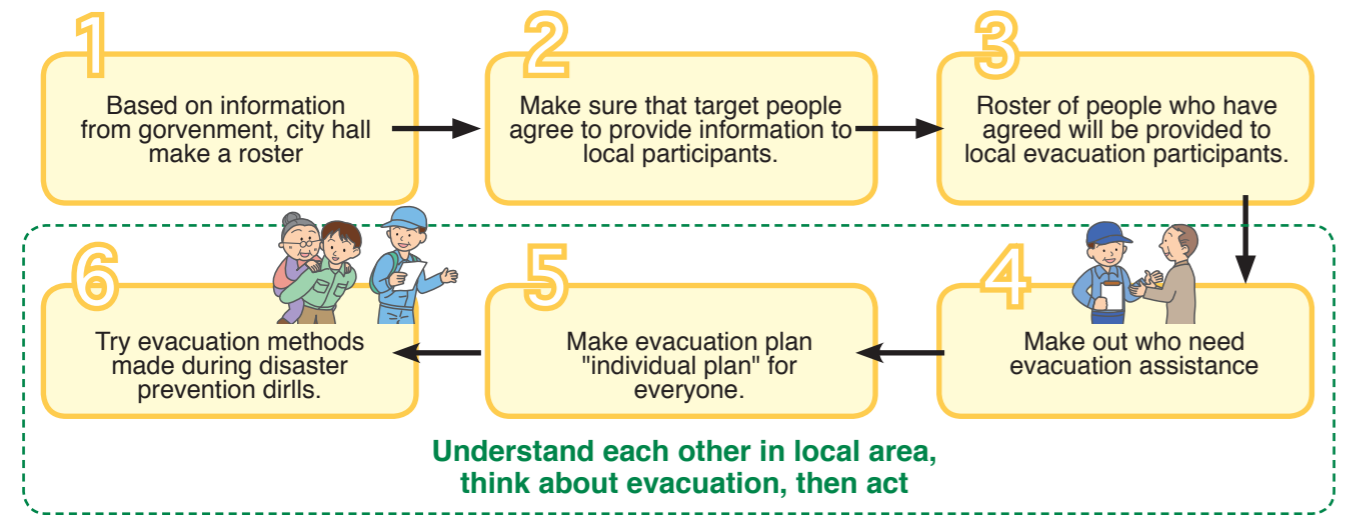
Based on the Great East Japan earthquake, an effective evacuation support should be taken.

Basic law for disaster countermeasures was revised. (April 1, 2014. Revised)

- ① Municipalities are obliged to make **rosters** of people who need assistance for evacuation.
- ② When people who need assistance for evacuation agree to make such a **roster**, it will be given to the local evacuation support participants, preparing for disasters from normal times.

Make good use of the roster, prepare for disasters from normal times.

In order to protect life from disasters, evacuation plan for everyone can be made according to the roster provided, preparation in advance, such as disaster prevention drills etc. are very important! Thank you for your cooperation!



※ The roster made by city is not every thing. Please provide information locally (update and add of target people)

People who need evacuation assistance in Beppu City are those who live in city at home, and fulfill conditions below:

- ① Acquire Certification of Needed Long-Term Care, and Correspond to Nursing care level 2 to 5
- ② Given Physical Disability Certificate Class 1 or 2
- ③ Given Rehabilitation Certificate A1, A2
- ④ Given Health and welfare certificate of persons with mental disorders Class 1
- ⑤ Approved Classification of disability Levels 2 to 6
- ⑥ Given Recipient Certificates of specific medical expenses (Specified as an incurable disease) from Oita prefecture
- ⑦ Registered Beppu City Disaster time Assisted person since before
- ⑧ Required care especially by Welfare commissioner and Autonomy commissioner except above
- ⑨ Hoped entry on List by yourself, and Approved that care is required especially except above



Flood and Sediment Disaster Prevention Map

How to use the Disaster Prevention Map

This Disaster Prevention City Map offers you map information that contains each location of the Evacuation shelter, dangerous areas, caution zones, organizations related to disaster prevention, along with countermeasures you should take according to the disaster type. Please check Evacuation shelters and dangerous areas around your house to prepare for an emergency.

※Those dangerous areas and caution zones contained in this map are identified based on the reference materials investigated and specified Oita Prefecture on 31st August, 2017. There is a possibility some places are additionally designated.

Legends

	Steep slope with danger of collapse		Above sea level (m) 24.6 1 Evacuation site No.		Police station
	Landslide danger area		20.4 4		Emergency hospital
	Gorge in danger of avalanche of rocks and earth		Above sea level (m) 5.5		Heliport
	A line of 5-m above sea level				Earthquake resistant tank holding drinking water
	A line of 10-m above sea level				Siren speaker

※The guide line for evacuation when tsunamis occur.

Designation of Sediment disaster risk areas and Sediment disaster special risk areas (by Oita prefecture)

