

# The Safety of Persons Requiring Evacuation Assistance "Prepare Together and Evacuate Together."

## ◆Who are Persons Requiring Evacuation Assistance?

They are persons requiring assistance during evacuation when disasters occur. They include those who are elderly, persons with disabilities, persons who are sick or injured, infants, and persons from other countries. Please cooperate and help each other in the community to protect these individuals from disasters.



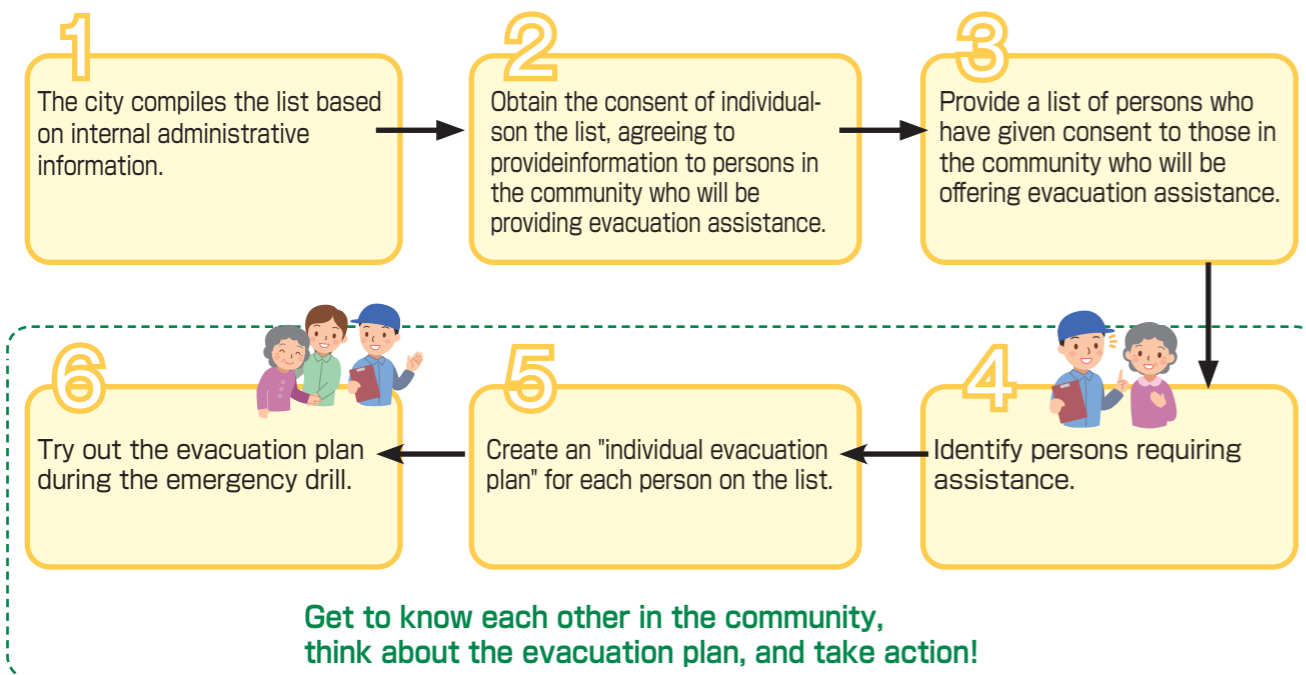
## Support System

Based on lessons learned from the Great East Japan Earthquake and other recent disasters, the **Disaster Countermeasures Basic Act** was revised to ensure practical evacuation support. (Implemented on May 20, 2021)

- (1) Municipalities are now required to prepare a list of people who have difficulty evacuating on their own during a disaster (Persons Requiring Evacuation Assistance).
- (2) To strengthen emergency preparedness, the list of Persons Requiring Evacuation Assistance, with their consent, will be provided during non-emergency periods to persons in the community who will be providing evacuation assistance.
- (3) A plan for implementing evacuation assistance for each Person Requiring Evacuation Assistance (individual evacuation plan) is to be prepared.

## Use the list, prepare during non-emergency periods, and be ready for disasters.

In order to protect lives from disasters, it is important to prepare an evacuation plan (individual plan) for each person in advance using the "List of Persons Requiring Evacuation Assistance." This list will be provided by the city to those who will be providing evacuation assistance. They can prepare for future disasters by looking after persons on the list on a daily basis and by conducting "emergency drills," among others. We ask for the understanding and cooperation of everyone in the community!



\*The list made by the city may not always be complete. We ask that the community provide us with information (adding eligible persons and updated information).

# Volcanic Alert Levels of Mt. Tsurumidake / Mt. Garandake

When a volcanic eruption occurs, eruptive phenomena such as "large volcanic cinders" or "pyroclastic flows" may occur, leaving almost no time to evacuate.

In order to respond appropriately to these phenomena, the Mt. Tsurumidake/Mt. Garandake Volcano Disaster Management Council, consisting of the prefectural government, cities and towns, volcano experts, and organizations related to volcano disaster prevention, discusses regulations to be implemented and disaster prevention measures to be taken in case of emergency, even during non-emergency periods. The Japan Meteorological Agency announces volcanic activity status using five different levels that correspond to keywords. Then, prefectures, municipalities, and various disaster prevention-related organizations implement "disaster prevention measures corresponding to each level" agreed upon through consultations that were held during non-emergency periods.

## Volcanic Alert Levels of Mt. Tsurumidake / Mt. Garandake

Classification	Abbreviated Terms	Target Area	Volcanic Alert Levels (Keywords)	Expected volcanic activity	Actions to be taken by residents	Actions to be taken by climbers
Emergency Warning	Volcanic Warning (residential area) or Volcanic Warning	Residential areas and areas near the crater	Level 5 Evacuation	(Evacuation Zone 3) An eruption that may cause serious damage to a residential area extending more than 3 km has occurred or is imminent.	Must evacuate from hazardous residential areas. (Hazardous areas and evacuation methods to be determined according to the situation.)	
				(Evacuation Zone 2) An eruption that may cause serious damage to a residential area extending up to 3 km has occurred or is imminent.		
				(Evacuation Zone 1) An eruption that may cause serious damage to a residential area extending up to 2 km has occurred or is imminent.		
			Level 4 Prepare for Evacuation	An eruption that may cause serious damage to a residential area is expected to occur.	Residents in areas where precaution is needed should prepare to evacuate, and persons requiring assistance must evacuate. (Hazardous areas to be determined according to the situation.)	
Warning	Volcanic Warning (around the crater) or Near-Crater Warning	From the crater to locations near the residential area	Level 3 Entry into the mountain restricted	An eruption that will cause a significant impact on locations near residential areas has occurred or is expected to occur.	No action required. (Stay alert to changes in volcanic activity. Entry into the mountain is restricted.) Persons requiring assistance should prepare for evacuation, etc., according to the situation.	Forbidding trespassing into the mountain, restrictions against entering the mountain, restrictions against entering hazardous locations, etc. (Restriction ranges to be determined according to the situation.)
		Around crater	Level 2 Trespassing around the crater restricted	An eruption that will affect the area around the crater has occurred or is expected to occur.	No action required.	Restrictions on entering areas near and around the crater. (Restriction ranges around the crater to be determined according to the situation.)
Forecast	Volcanic forecast	Inside the crater	Level 1 Potential for increased activity	Volcanic activity is calm. Possibility of volcanic ash emissions. Other related phenomena may occur in the crater.	No action required.	No restrictions. (Restrictions on entering the crater, depending on the situation.)